



CIELO VERDE

DESIGNED FOR LIFE

The DOUGLAS

ELEVATION A



LIVABLE AREA:

- 1248 sq. ft.

FOOTPRINT:

- Width 48' 0"
- Depth 52' 0"

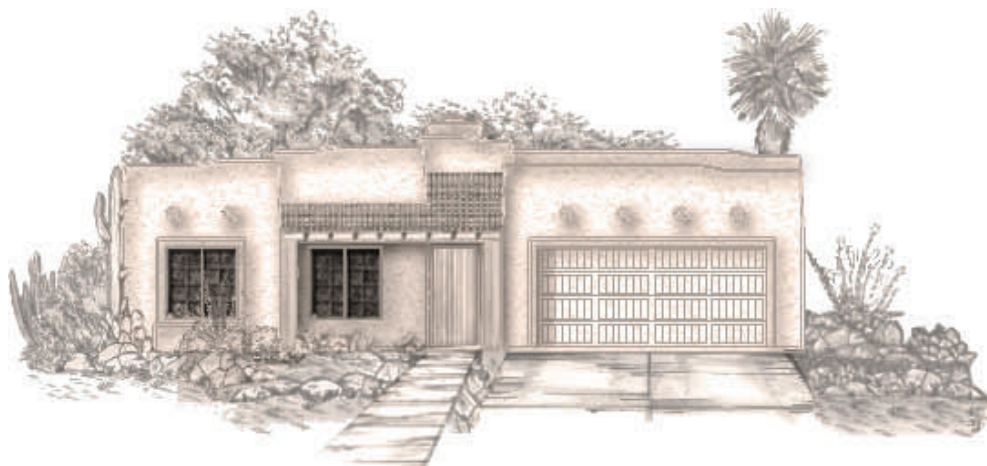
3 Bedrooms

2 Baths

OPTIONS:

3rd Car Garage

ELEVATION B



Cielo Verde Homes

Quality Built by Jacobson Companies

3477 S. Woodpecker Way | Yuma, Arizona 85365 | Tel: (928) 329-9000 | Fax: (928) 314-9980 | www.jacobsonhomesyuma.com/cieloverde.html

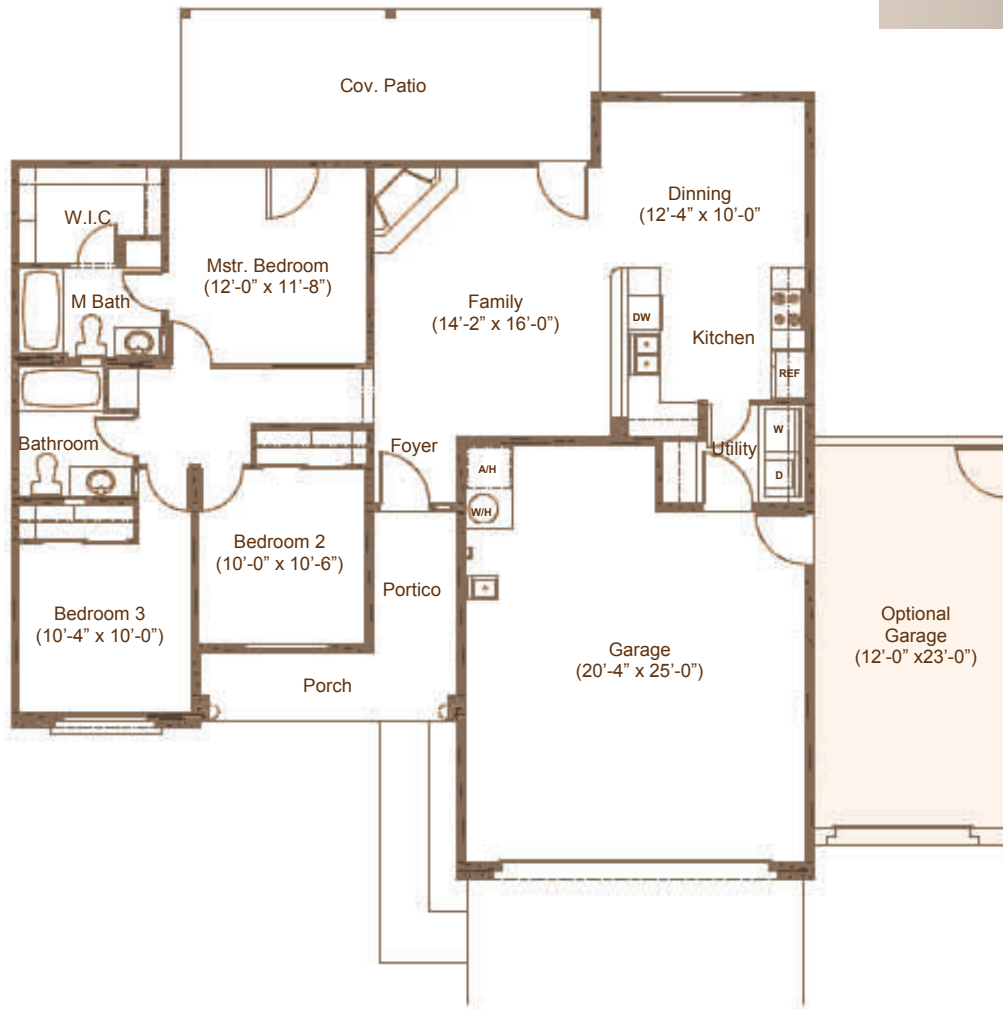


CIELO VERDE

DESIGNED FOR LIFE

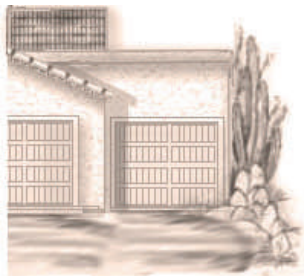
The DOUGLAS

1248 SQ. FT BASE PLAN



Shaded areas represent available options

GARAGE OPTION ELEV. A



GARAGE OPTION ELEV. B



Website: www.jacobsonhomesyuma.com/cieloverde.html

All dimensions and floor areas are approximate. Prices and specifications are subject to change without notice, solely at builder's discretion. Elevation drawings are artistic interpretations of the appearance of the design, which may differ from the actual result when built. Each home to be constructed is subject to terms of approval of a building permit by the City of Yuma. Options and additions depicted are not available on all plans or lots.

